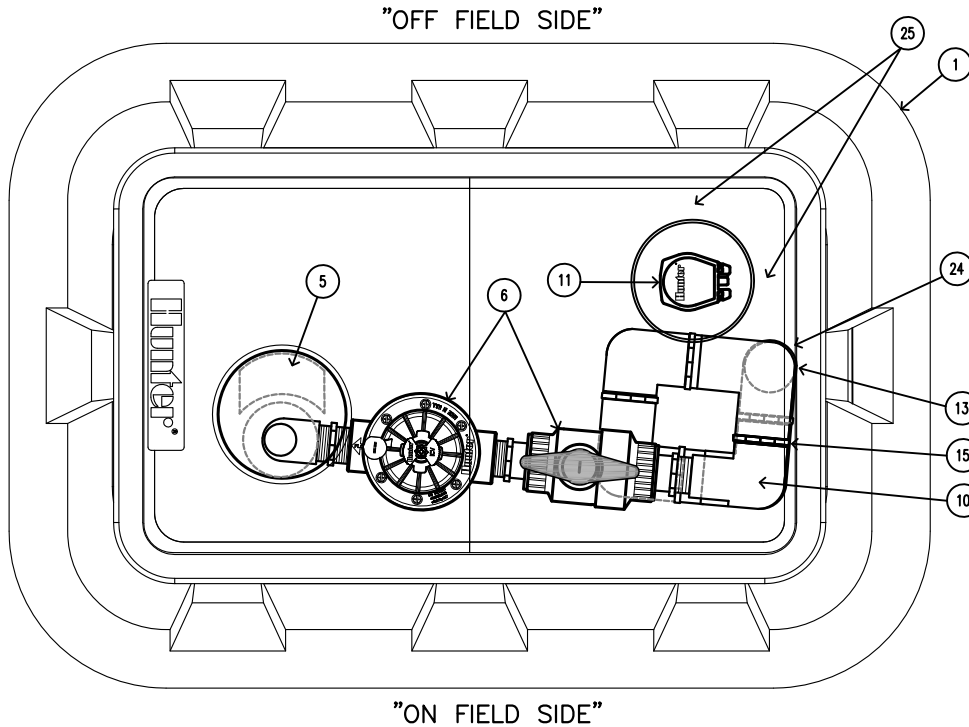


STK-2B

SYNTHETIC TURF VAH ROTOR & ENCLOSURE SYSTEM



- ① HUNTER ST173026B* COMPOSITE BOX & 2-PIECE POLYMER-CONCRETE LID ASSEMBLY WITH CAST-IN OPENING TO SUPPORT ROTOR LATERAL THRUST PLUS CAST IN OPENING WITH CIRCULAR COVER FOR QUICK COUPLER ACCESS
- ② OPTIONAL - SYNTHETIC TURF OR RUNNING TRACK MATERIAL ATTACHED TO COVERS
- ③ FINISHED GRADE SET TO FIELD PERIMETER TACK/GLUE BOARD OR AS PER SPECIFICATION
- ④ 50mm X 100mm TACK/GLUE BOARD AS PER SPECIFICATION ALL SIDES
- ⑤ HUNTER STG-900 WITH RUBBER COVER KIT 473900 INSTALLED
- ⑥ HUNTER STVBVKF KIT - INCLUDES HUNTER ICV-151G, 1 1/2" BALL VALVE (235 PSI RATED) PLUS ACME PIVOT CONNECTION FITTINGS
- ⑦ CONTROL VALVE SLEEVE, 225mm DIAMETER X 280mm TALL WITH 2 NOTCHED SECTIONS FOR PIPING
- ⑧ BALL VALVE SLEEVE, 160mm DIAMETER X 280mm TALL WITH 2 NOTCHED SECTIONS FOR PIPING
- ⑨ HUNTER 239800 ROTOR ADAPTER FITTING WITH 2 ACME PIVOT POINTS
- ⑩ HUNTER ST2008VA PREFABRICATED 63mm SCH 80 PVC SWING JOINT WITH 6 ACME PIVOT POINTS TO PROVIDE MULTI-AXIS ARTICULATION AND ALIGNMENT OF ROTOR TO THE OPENING IN ENCLOSURE COVER
- ⑪ HUNTER HQ5RC-BSP QUICK COUPLING VALVE
- ⑫ HUNTER 241400 BSP INLET ADAPTER
- ⑬ SUPPLY PIPING AND FITTINGS - 63mm MINIMUM FROM MAINLINE THROUGH TO ST2008VA SWING JOINT
- ⑭ SCH 80 PVC RISER SUPPLY PIPING AND FITTINGS - 32mm MINIMUM
- ⑮ ACME THREADED PIVOTING POINTS (9 TOTAL)
- ⑯ 20mm MINUS WASHED GRAVEL
- ⑰ 16mm X 760mm REBAR STAKE AND STAINLESS STEEL STRAPING
- ⑱ COMPACTED FIELD BASE MATERIAL AS PER SPECIFICATION
- ⑲ PROVIDE DRAINAGE VIA ACCESS TO FIELD DRAINAGE SYSTEM
- ⑳ WATERPROOF CONNECTIONS PER SPECIFICATION
- ㉑ TOP OF QUICK COUPLER SET 13mm BELOW UNDERSIDE OF ENCLOSURE COVER
- ㉒ GRAVEL LEVEL 130mm BELOW UNDERSIDE OF ENCLOSURE COVER (TO BOTTOM OF ROTOR'S COMPARTMENT)
- ㉓ ELEVATION OF SWING JOINT'S INLET - SET SECOND PIVOT POINT ON SWING JOINT WITH BOTTOM OF ENCLOSURE PER SIDE VIEW DETAIL DRAWING (660mm BELOW ENCLOSURE TOP)
- ㉔ LOCATION OF SWING JOINT'S INLET - SET INLET AT CENTERLINE EDGE OF ENCLOSURE COVER PER TOP VIEW DETAIL DRAWING. INLET CAN BE SET DIRECTLY BELOW ENCLOSURE RIM AT CENTERLINE. INLET MUST NOT BE SET CLOSER TO ROTOR THAN SHOWN.
- ㉕ LOCATION OF QUICK COUPLER INLET PIPING - MEASURE INLET PIPING LOCATION AT TOP RIGHT HAND CORNER OF ENCLOSURE - 130mm FROM TOP EDGE AND 130mm FROM SIDE EDGE.

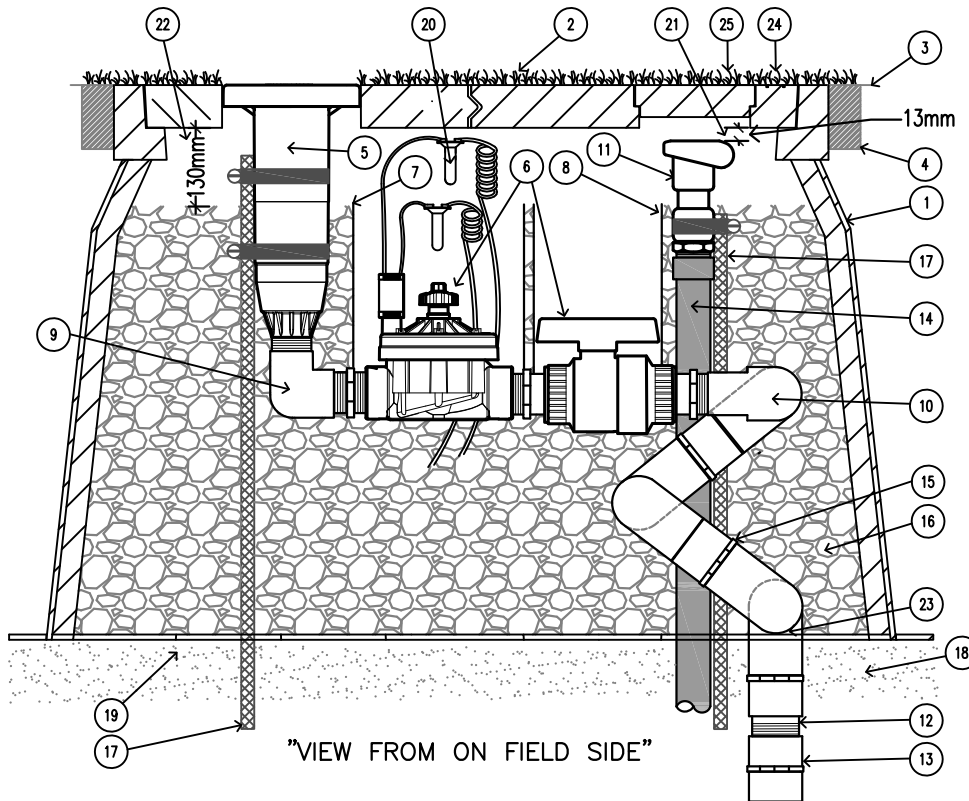
*ENCLOSURE DIMENSIONS

2 - PIECE COVER - 432mm X 762mm
 EXPOSED RIM - 508mm X 838mm
 OVERALL HEIGHT - 660mm
 BASE PAD - 686mm X 1041mm

XX STK-2B TOP VIEW

SCALE: 1 : 8

Hunter IRRIGATION DETAIL



XX STK-2B SIDE VIEW

SCALE: 1 : 8

Hunter IRRIGATION DETAIL