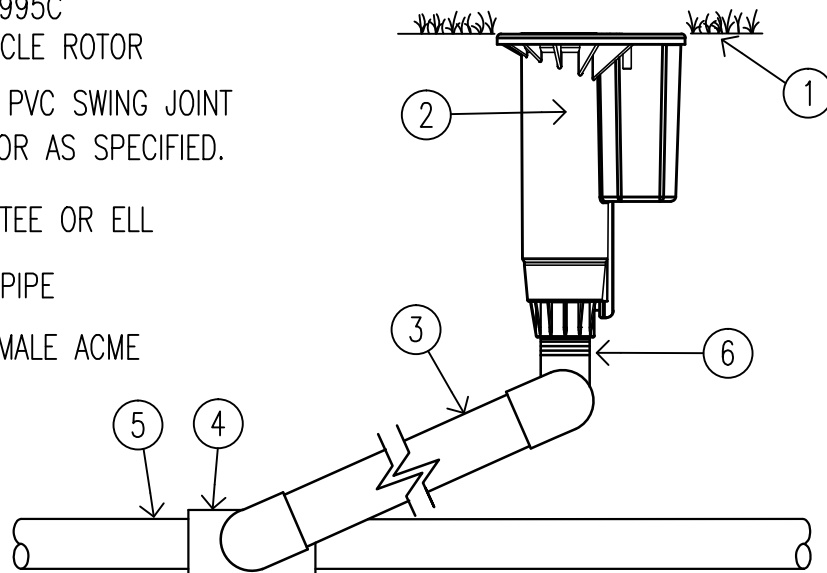


- ① FINISH GRADE
- ② MODEL G995C
PART CIRCLE ROTOR
- ③ UNITIZED PVC SWING JOINT
1-1/2" OR AS SPECIFIED.
- ④ LATERAL TEE OR ELL
- ⑤ LATERAL PIPE
- ⑥ 1-1/2" MALE ACME



XX

G995C GEARED ROTOR

SCALE: 1.5" = 1'-0"

Hunter IRRIGATION DETAIL